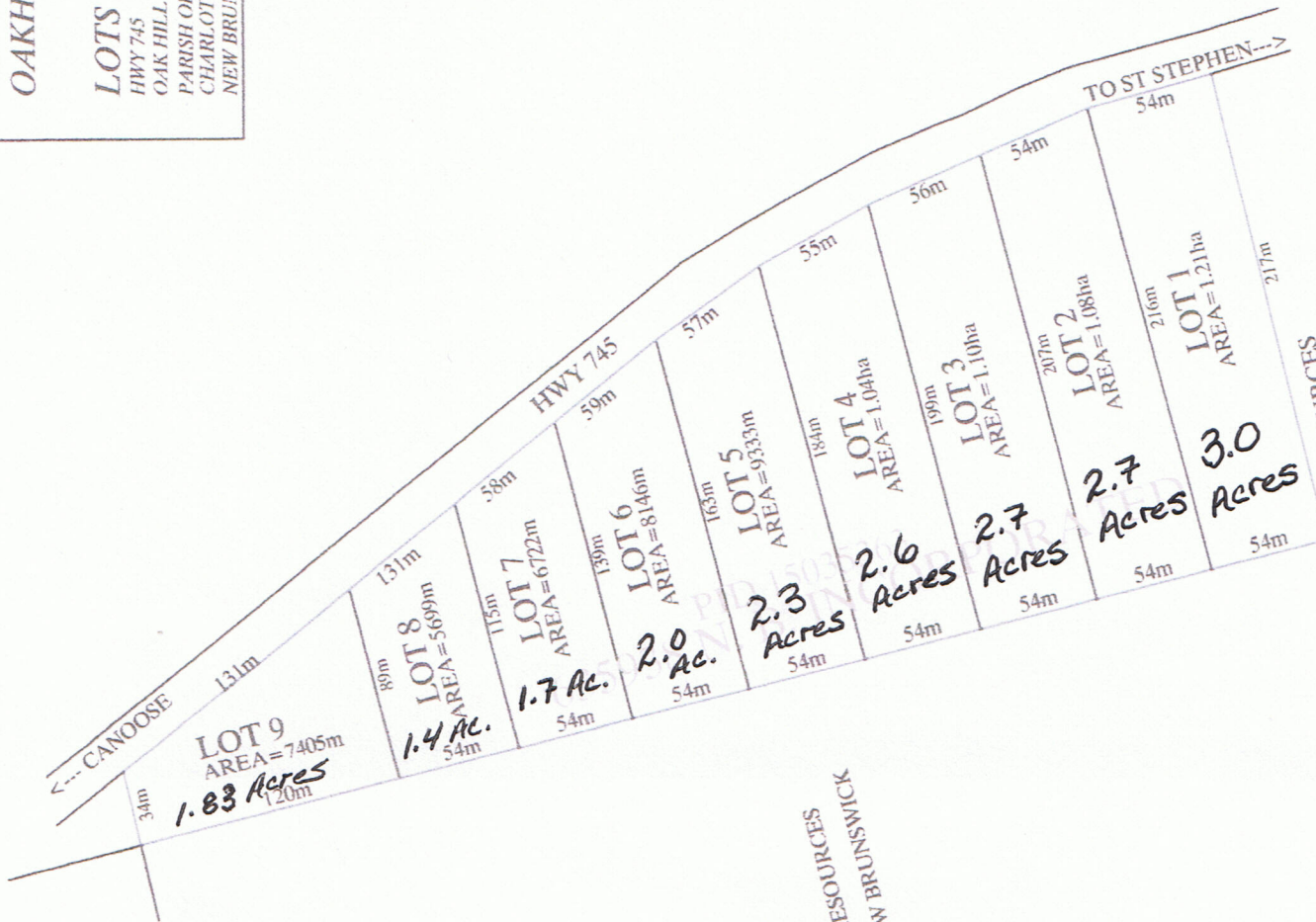


TENTATIVE SUBDIVISION PLAN  
OAKHILL ESTATES SUBDIVISION 10-1

LOTS 1 TO 9  
HWY 745  
OAK HILL  
PARISH OF ST JAMES  
CHARLOTTE COUNTY  
NEW BRUNSWICK

MURPHY SURVEYS (1990) LTD.  
0.99 REF. 3  
OLD RIDGE, NB E3, A2  
906-566-1041 pb  
906-566-0576 fax  
murphysurveys@nb-tele.net



NOT TO SCALE

DEPT NATURAL RESOURCES  
PROVINCE OF NEW BRUNSWICK

DEPT NATURAL RESOURCES  
PROVINCE OF NEW BRUNSWICK